

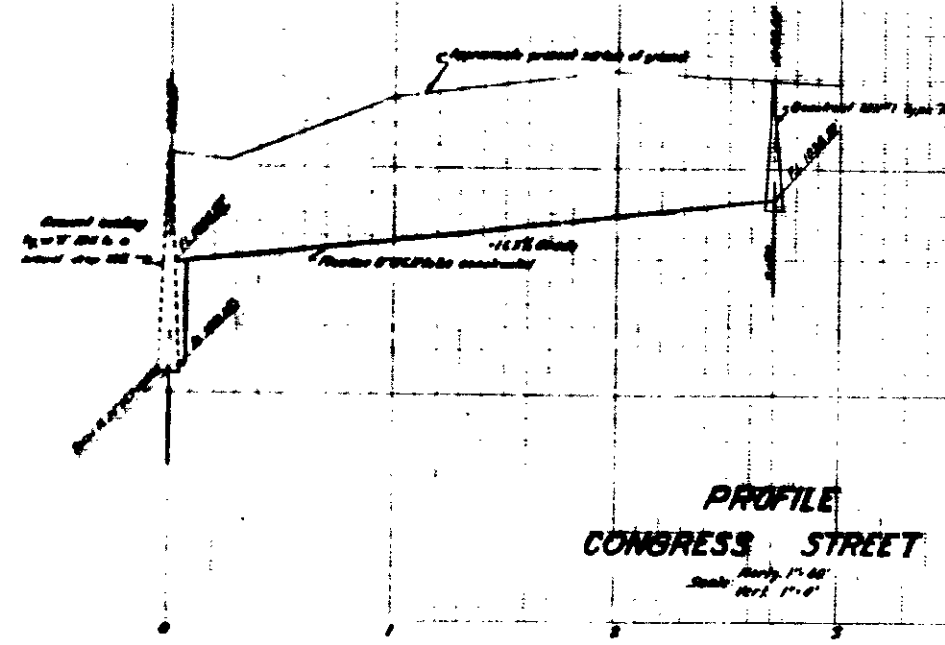
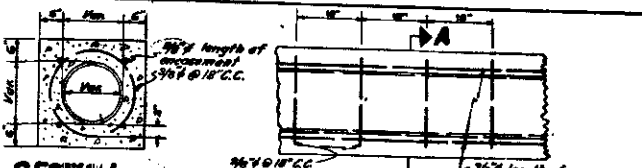
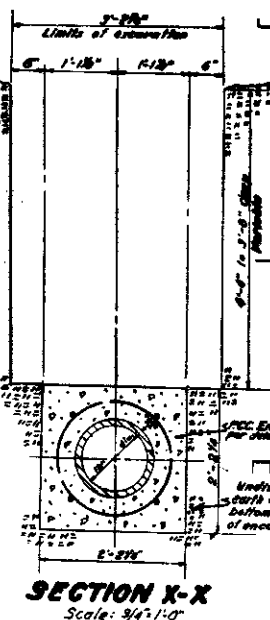
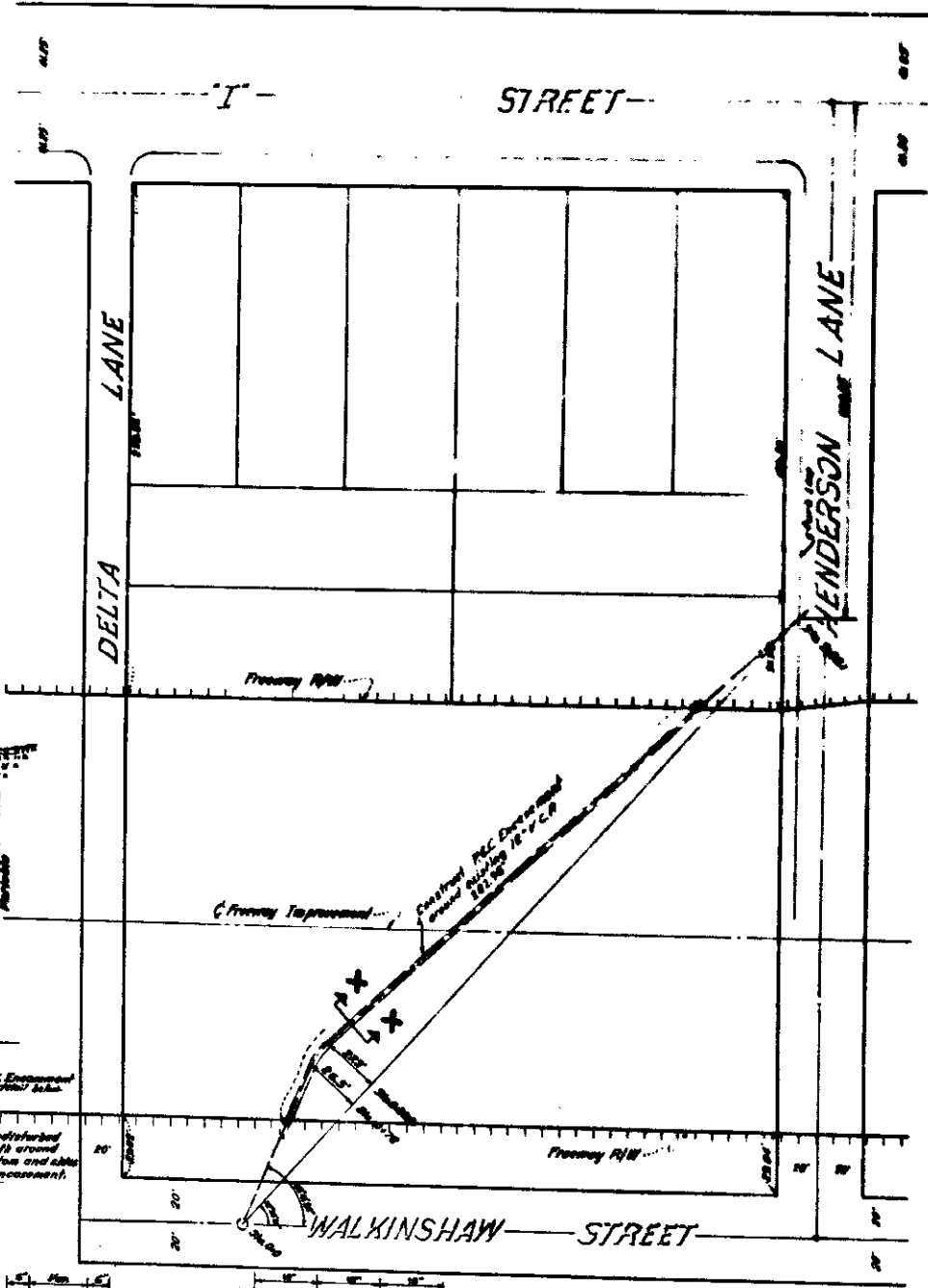
GENERAL NOTES

1. All work embodied on these plans shall be done in conformity with applicable provisions of State of Calif. Dept. of Highways Specifications dated August, 1954.
2. 8"x4" Wyes with connecting sewer to be constructed are shown in plan thus "W".
3. All vitrified clay pipe house connections shall be constructed on an upward grade of 2% from main sewer, and shall extend from the main sewer to property line.
4. All house connections, except where noted in the plan, are approximate, and exact locations shall be determined in the field.
5. 8"x4" Wyes to be constructed are shown in plan thus "W".

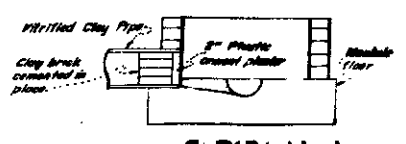
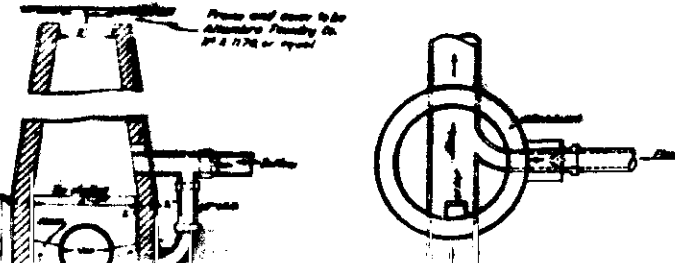
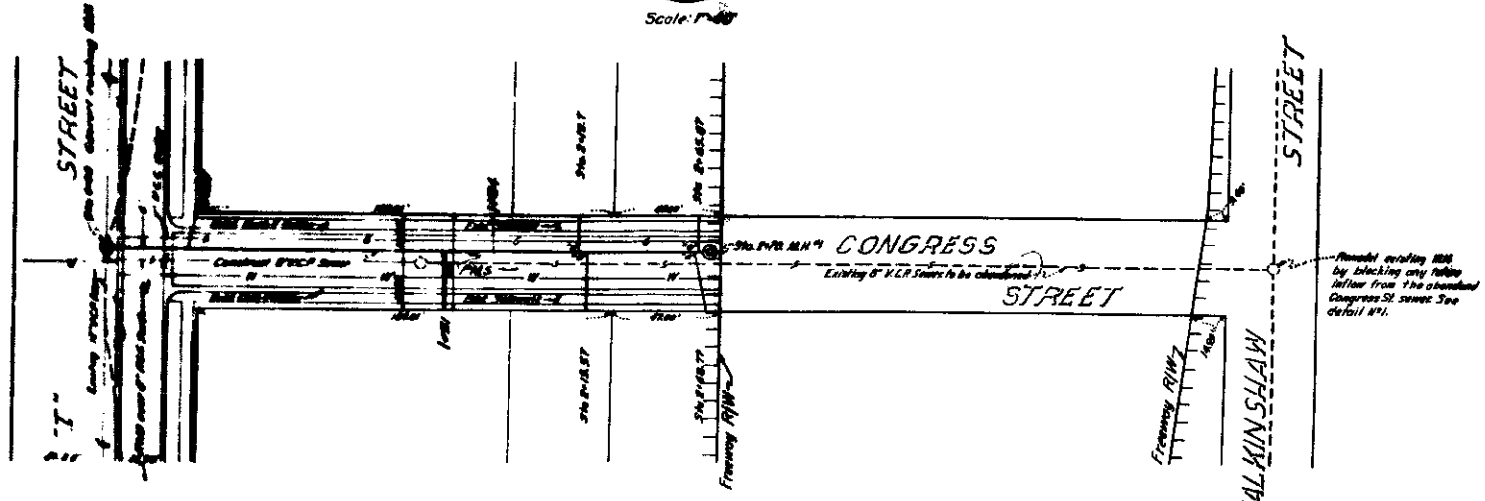
5. Existing sewer main shown as plus — 5 —
6. Existing water main shown as plus — 6 —
7. Existing gas lines shown as plus — 7 —
8. Existing telephone conduit, shown as plus — 8 —

B.M. 74 - 100270 - 54
 Steel pipe in by north of Pacific Ave
 at City of L. I. St., 325 ft. 5th 342.45 c
 Top
 Elevation 1000.00' Datum of State of Calif.
 Division of Highways
 The State of California City of San
 Bernardino

Disturbances shown on these plans
 are to the date of the City of
 San Bernardino



B.M. Stone N.E. of T. 2
 (Corner of
 Congress St.
 to 1000 ft. 1000 ft. 1000 ft.)



**395 FREEWAY RELOCATION
 SEWERS
 MILL ST. to 7th ST.**